

## УСТРОЙСТВА ПРИЕМА ДАННЫХ

# *ИНСТРУКЦИЯ ПО ЭКСПЛУАТАЦИИ*

По вопросам продаж и поддержки обращайтесь

Алматы (7273)495-231  
Ангарск (3955)60-70-56  
Архангельск (8182)63-90-72  
Астрахань (8512)99-46-04  
Барнаул (3852)73-04-60  
Белгород (4722)40-23-64  
Благовещенск (4162)22-76-07  
Брянск (4832)59-03-52  
Владивосток (423)249-28-31  
Владикавказ (8672)28-90-48  
Владимир (4922)49-43-18  
Волгоград (844)278-03-48  
Вологда (8172)26-41-59  
Воронеж (473)204-51-73  
Екатеринбург (343)384-55-89  
Иваново (4932)77-34-06  
Ижевск (3412)26-03-58  
Иркутск (395)279-98-46  
Казань (843)206-01-48

Калининград (4012)72-03-81  
Калуга (4842)92-23-67  
Кемерово (3842)65-04-62  
Киров (8332)68-02-04  
Коломна (4966)23-41-49  
Кострома (4942)77-07-48  
Краснодар (861)203-40-90  
Красноярск (391)204-63-61  
Курск (4712)77-13-04  
Курган (3522)50-90-47  
Липецк (4742)52-20-81  
Магнитогорск (3519)55-03-13  
Москва (495)268-04-70  
Мурманск (8152)59-64-93  
Набережные Челны (8552)20-53-41  
Нижний Новгород (831)429-08-12  
Новокузнецк (3843)20-46-81  
Ноябрьск (3496)41-32-12  
Новосибирск (383)227-86-73

Омск (3812)21-46-40  
Орел (4862)44-53-42  
Оренбург (3532)37-68-04  
Пенза (8412)22-31-16  
Петрозаводск (8142)55-98-37  
Псков (8112)59-10-37  
Пермь (342)205-81-47  
Ростов-на-Дону (863)308-18-15  
Рязань (4912)46-61-64  
Самара (846)206-03-16  
Саранск (8342)22-96-24  
Санкт-Петербург (812)309-46-40  
Саратов (845)249-38-78  
Севастополь (8692)22-31-93  
Симферополь (3652)67-13-56  
Смоленск (4812)29-41-54  
Сочи (862)225-72-31  
Ставрополь (8652)20-65-13  
Сургут (3462)77-98-35

Сыктывкар (8212)25-95-17  
Тамбов (4752)50-40-97  
Тверь (4822)63-31-35  
Тольятти (8482)63-91-07  
Томск (3822)98-41-53  
Тула (4872)33-79-87  
Тюмень (3452)66-21-18  
Ульяновск (8422)24-23-59  
Улан-Удэ (3012)59-97-51  
Уфа (347)229-48-12  
Хабаровск (4212)92-98-04  
Чебоксары (8352)28-53-07  
Челябинск (351)202-03-61  
Череповец (8202)49-02-64  
Чита (3022)38-34-83  
Якутск (4112)23-90-97  
Ярославль (4852)69-52-93

Россия +7(495)268-04-70

Казахстан +7(7172)727-132

Киргизия +996 (312)96-26-47

# SKYWATCH<sup>®</sup> N.E.W.S.

## Operating manual



SWISS  MADE



# Index

English

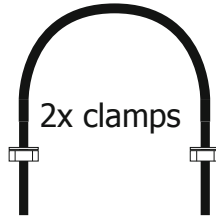
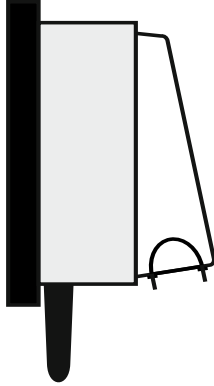
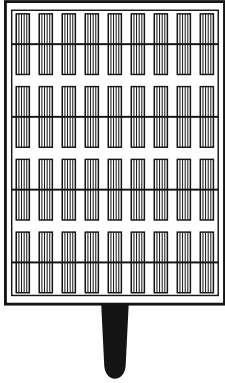
## F

Introduction	
Items included .....	4
Warranty .....	4
General description of operation .....	5
Meteorological measurements and transmitter .....	5
Publication of the measurements .....	5
Clock and time synchronization .....	5
Technical Specifications	
General data .....	6
Meteorological transmitter .....	6
SIM card and GSM subscription .....	7
MeteoLogic software	
Installation of the software .....	8
USB driver .....	8
Connecting to the station .....	8
Setting the time .....	9
Programming the station .....	9
Installation guide	
Step 1 - Inserting the SIM card .....	10
Step 2 - Installation of the meteorological transmitter .....	11
Step 3 - Connecting up the connectors .....	11
Step 4 - Software configuration of the station .....	12
Step 5 - Secure and orientate the station .....	12
Step 6 - Connection to earth .....	12
Technical assistance	
Contact .....	13

# Introduction

## Items included

1x N.E.W.S. weather station



2x clamps

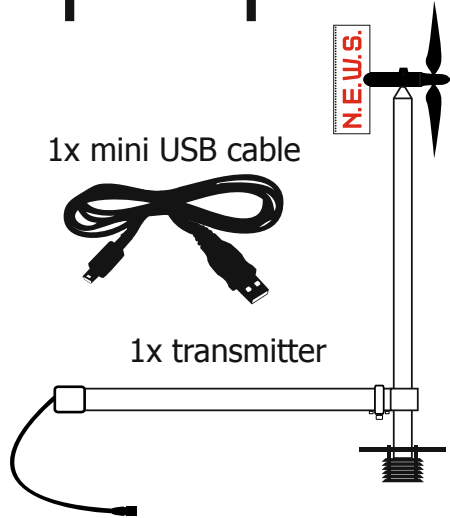
1x mini USB cable



1x MeteoLogic CD



1x transmitter



## Technical Specifications

### General data:

Dimensions (L x H x D)	Housing: 210 x 330 x 220 mm Transmitter: 540 x 500 x 150 mm
Weight	Housing: 6.5 kg Transmitter: 1 kg
Protection class	Housing: IP 67 Transmitter: IP 67
Materials	Housing: stainless steel Transmitter: stainless steel and PVC shock
Power Supply	Solar panel 12 V, 5 W Battery 6 V, 12 Ah
Battery operation (without sun)	Approx. 3 months (transmitting 10 times per day)
Measuring channels	Wind direction, mean wind speed, maximum wind speed, air temperature, relative air humidity. Pressure as an option.
Recording	90,000 time-stamped measurements in non-volatile memory
Clock	Internal with time zone
Configuration connector	mini USB
Operating temperature	Measurement and recording: -30 ... +80 °C Data transmission: -25 ... +70 °C

### Meteorological transmitter:

Wind	
Sampling	1 measurement per second
Average wind direction Measuring range Precision Resolution	0 to 360° ± 5° 1°
Mean and maximum wind speed Measuring range Precision Resolution	3 to 200 km/h ± 3% 0.1 km/h

Temperature and humidity	
Air temperature	
Measuring range	-40 to +90 °C
Precision	± 0.6 °C (0 to +50 °C) ± 1.5 °C (-40 to +90 °C)
Resolution	0.1 °C
Air relative humidity	
Measuring range	0 to 100 %RH
Precision	± 1.8 %RH (10 to 90 %RH)
Resolution	0.1 %RH

Barometric pressure (option)	
Measuring range	10 to 1100 mbar
Absolute precision	± 1.5 mbar (750 to 1100 mbar)
Resolution	0.1 mbar

## SIM card and GSM subscription

The Skywatch® N.E.W.S. station has a GPRS modem for data transmission via the GSM network. To make use of the latter, an active SIM card must be installed, with or without a subscription. The type of subscription linked to this SIM card needs to permit data transmission via GPRS. Options that include the volume of data could be appropriate. For information, one data transmission can be between 5 kB and 30 kB, depending on the interval between sendings.

Please note: the SIM card should be configured without a security PIN code before it is inserted into the device. This can be carried out on an ordinary mobile telephone.

## MeteoLogic software

The MeteoLogic software was developed as a user interface for setting up the station.

### Installation of the software

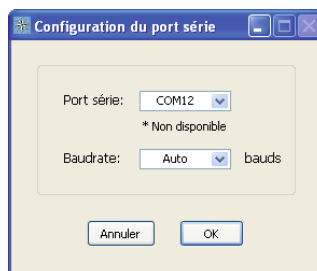
To start the installation of the software, double-click on the file *setup.exe* on the CD under software. Then all that is required is to follow the instructions.

### USB driver

When the station is connected to the PC by using the USB cable, a new virtual serial port is installed on the computer. If necessary, the driver is available on the CD under *//misc/driver*.

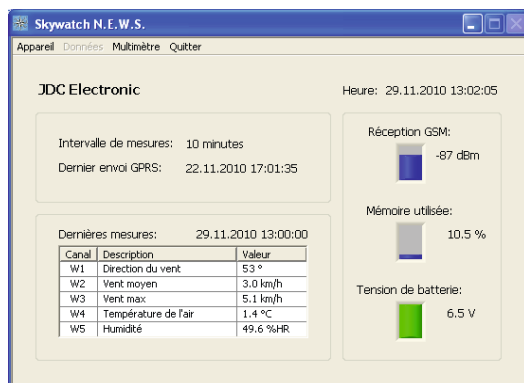
### Connecting to the station

Once installed, the MeteoLogic software can be run and the first step is to select the serial port to be used. By clicking on *Serial port* in the *Configuration* menu, the list of available serial ports is generated and displayed for selection. Click *OK* after making the selection.



*Remark: the USB cable must be connected to the station before carrying out this configuration.*

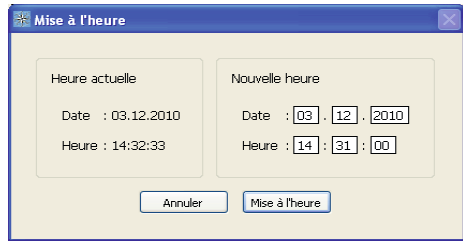
Click on the menu *Connect* to open communications with the Skywatch® N.E.W.S. weather station. The following window appears and displays the configuration and parameters of the station.



## Setting the time

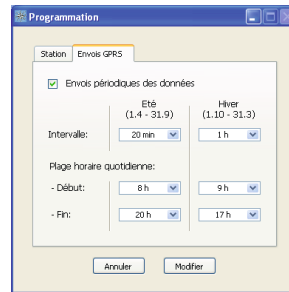
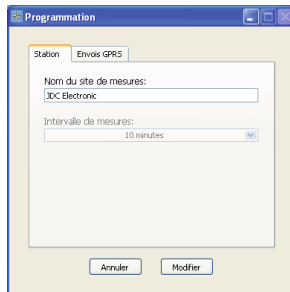
Use the software to set the time in the station by clicking on *Time set* in the *Device* menu.

The times of measurement and transmission are automatically synchronised using the new time.



## Programming the station

By clicking on *Programming* in the *Device* menu, the user can program the name of the site in the *Station* tab. In the tab *GPRS transmissions* the transmission intervals and daily time limit can be defined depending on the season.

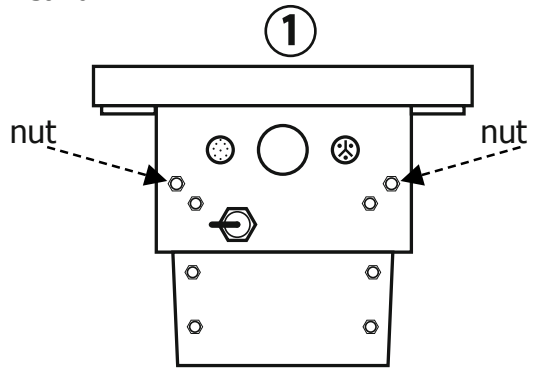




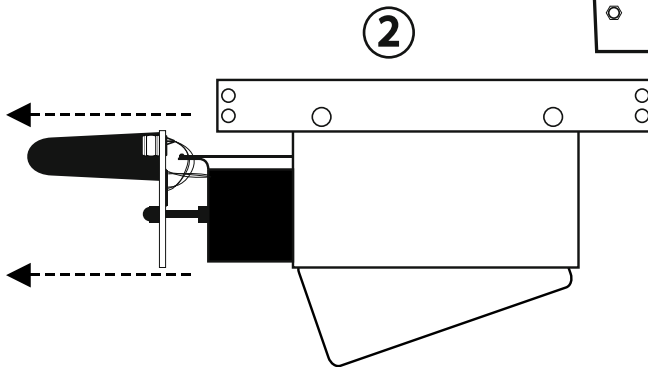
## Installation guide

### Step 1 - Inserting the SIM card

① Unscrew the two nuts shown in the diagram.



② Withdraw the station from the housing, being careful with the wires.

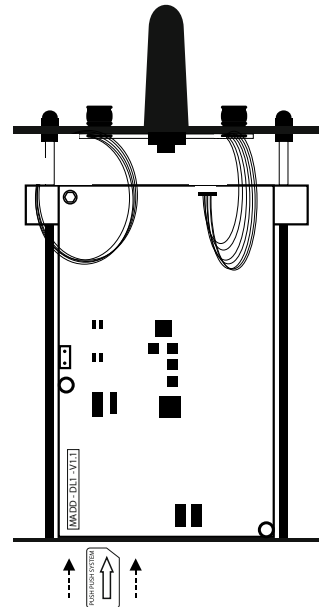


③ Orientate the station as shown in the illustration opposite, and insert the SIM card in the location provided as shown.



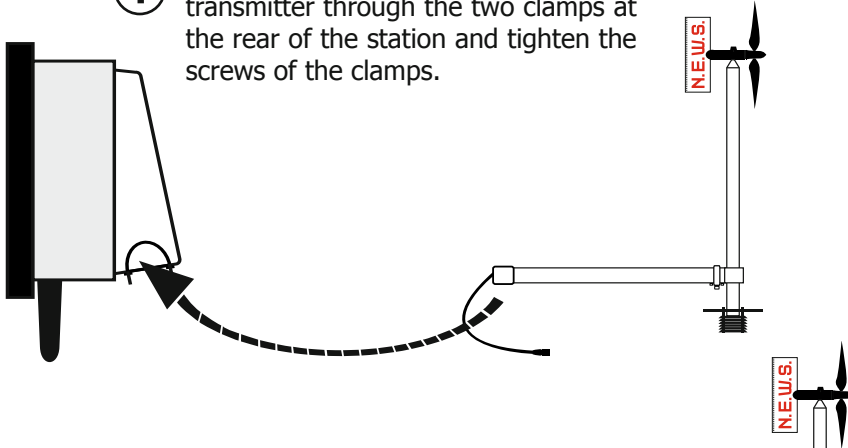
Remember to remove the PIN code protection of the SIM card by using a separate mobile telephone.

④ Replace the station into the housing, being careful with the wires.



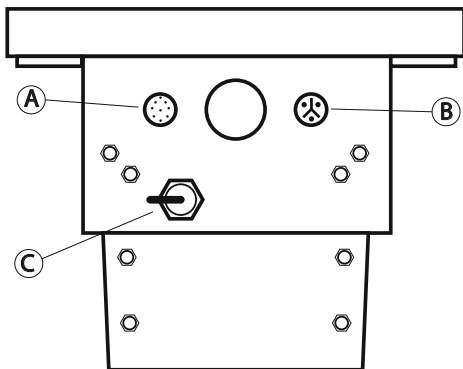
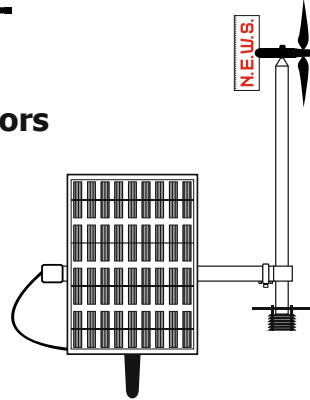
## Step 2 - Installation of the meteorological transmitter

- 1 Pass the horizontal bar of the transmitter through the two clamps at the rear of the station and tighten the screws of the clamps.



## Step 3 - Connecting up the connectors

- 1 Connect the transmitter to socket **A** as shown below.
- 2 Connect the solar panel to socket **B** as shown below.

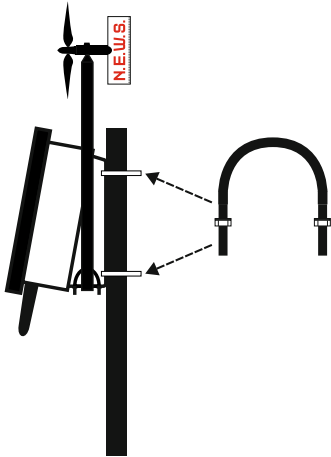


- A** Connector of the MeteoLogic transmitter
- B** Solar panel connector
- C** USB connector

## Step 4 - Software configuration

Refer to the previous chapter "MeteoLogic Software".

## Step 5 - Secure and orientate the station



- 1 Place the station against its support pole, position the clamps in the holes provided for this purpose and screw them into place.

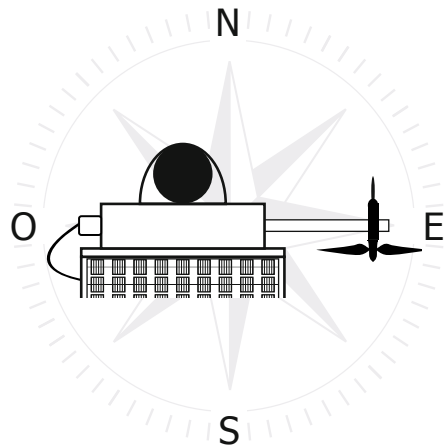
The clamps are available in 3 different diameters:

- Ø 45 - 60 mm
- Ø 60 - 74 mm
- Ø 74 - 90 mm

The choice of diameter must be specified with the order.

- 2 Accurate orientation of the station is crucial for the validity of the measurements of wind direction.

The arm of the sensor **must** point accurately to the east. The solar panel will then face the south.



View from above

## Step 6 - Connection to earth

To improve protection of the station when there is lightning or overvoltage from electromagnetic effects, it is advisable to provide a good earth connection for the housing. Suitable materials can be obtained as an option.

## По вопросам продаж и поддержки обращайтесь

Алматы (7273)495-231  
Ангарск (3955)60-70-56  
Архангельск (8182)63-90-72  
Астрахань (8512)99-46-04  
Барнаул (3852)73-04-60  
Белгород (4722)40-23-64  
Благовещенск (4162)22-76-07  
Брянск (4832)59-03-52  
Владивосток (423)249-28-31  
Владикавказ (8672)28-90-48  
Владимир (4922)49-43-18  
Волгоград (844)278-03-48  
Вологда (8172)26-41-59  
Воронеж (473)204-51-73  
Екатеринбург (343)384-55-89  
Иваново (4932)77-34-06  
Ижевск (3412)26-03-58  
Иркутск (395)279-98-46  
Казань (843)206-01-48

Калининград (4012)72-03-81  
Калуга (4842)92-23-67  
Кемерово (3842)65-04-62  
Киров (8332)68-02-04  
Коломна (4966)23-41-49  
Кострома (4942)77-07-48  
Краснодар (861)203-40-90  
Красноярск (391)204-63-61  
Курск (4712)77-13-04  
Курган (3522)50-90-47  
Липецк (4742)52-20-81  
Магнитогорск (3519)55-03-13  
Москва (495)268-04-70  
Мурманск (8152)59-64-93  
Набережные Челны (8552)20-53-41  
Нижний Новгород (831)429-08-12  
Новокузнецк (3843)20-46-81  
Ноябрьск (3496)41-32-12  
Новосибирск (383)227-86-73

Омск (3812)21-46-40  
Орел (4862)44-53-42  
Оренбург (3532)37-68-04  
Пенза (8412)22-31-16  
Петрозаводск (8142)55-98-37  
Пермь (342)205-81-47  
Ростов-на-Дону (863)308-18-15  
Рязань (4912)46-61-64  
Самара (846)206-03-16  
Саранск (8342)22-96-24  
Санкт-Петербург (812)309-46-40  
Саратов (845)249-38-78  
Севастополь (8692)22-31-93  
Симферополь (3652)67-13-56  
Смоленск (4812)29-41-54  
Сочи (862)225-72-31  
Ставрополь (8652)20-65-13  
Сургут (3462)77-98-35

Сыктывкар (8212)25-95-17  
Тамбов (4752)50-40-97  
Тверь (4822)63-31-35  
Тольятти (8482)63-91-07  
Томск (3822)98-41-53  
Тула (4872)33-79-87  
Тюмень (3452)66-21-18  
Ульяновск (8422)24-23-59  
Улан-Удэ (3012)59-97-51  
Уфа (347)229-48-12  
Хабаровск (4212)92-98-04  
Чебоксары (8352)28-53-07  
Челябинск (351)202-03-61  
Череповец (8202)49-02-64  
Чита (3022)38-34-83  
Якутск (4112)23-90-97  
Ярославль (4852)69-52-93

Россия +7(495)268-04-70

Казахстан +7(7172)727-132

Киргизия +996(312)96-26-47

Адрес: <https://jdc.nt-rt.ru/> || эл. почта [jcd@nt-rt.ru](mailto:jcd@nt-rt.ru)